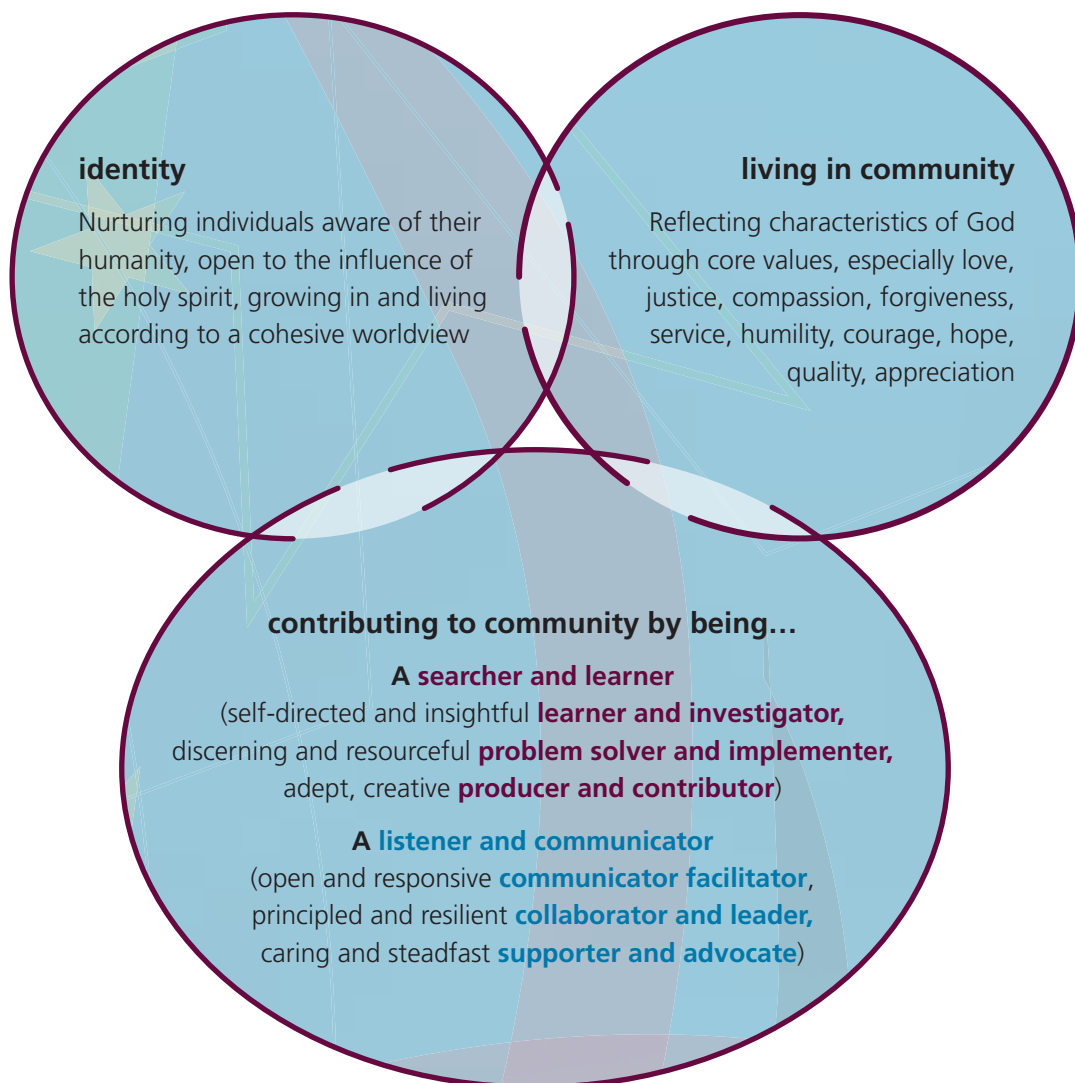


Figure 1: Diagram of the components comprising *Lifelong Qualities for Learners*

Lifelong Qualities for Learners

Central to the core statement is a hope for each person that they will develop a clear sense of their personal identity and worth. As they experience life in a Lutheran school community, learning about and growing in their understanding of a Lutheran worldview, they begin to develop and shape their personal worldview. Increasingly, over time there will be congruence between their beliefs and their actions. Such individuals live life with integrity.

The ethos and culture of a Lutheran school are reflected in its values. These are drawn from a world view which has core Lutheran beliefs at its foundation. All people living, learning and working in a Lutheran school have opportunity to understand themselves better through living in a nurturing community with explicit values. While these values are particularly derived from Lutheran beliefs, they also encompass various dimensions of human experience (religious/spiritual, aesthetic, moral/ethical, physical/recreational, socio-cultural, economic, political, technical/vocational, cognitive/intellectual, and interpersonal/relational).



Attributes and abilities are the 'are's and do's'. Each consists of two attributes (what people are) and two abilities (what people do). There is an equal balance between the kinds of characteristics, skills, and dispositions needed to develop individually as searcher and learner (IQ) and those needed to interact, empathise, and live in relationship with others (EQ). As growing lifelong learners, everyone in a Lutheran school develops their unique gifts and talents so that they can be valued and valuable contributors to their communities through love and service.